



DECORZEN MICRO

MicroPerforated interior acoustic panel systems

www.decorsystems.com.au

DECOR[®]
Systems

Product Features and Benefits

DESIGN AND SPECIFICATIONS

DecorZen Micro panels consist of micro perforated natural wood veneer laminated to a substantive timber core with DecorSorb Integrated Acoustic textile laminated to the rear of the panel. Perforations are a nominal 0.50mm and spaced horizontally and vertically.

DecorZen Micro panels are available pre-finished in clear lacquer or unfinished for finishing application by others.

EASE & FLEXIBILITY | Highly Customizable & Fully Engineered

DecorZen Micro acoustic panels are fully engineered for a precise fit and delivered on-site ready for installation.

- Excellent acoustic performance
- Seamless appearance
- Flexibility in design
- Continuous perforations mean panels can easily be cut on site
- Ideal for wall and ceiling applications
- Easy and quick to install with our DecorMount concealed fixing systems
- DecorSorb integrated acoustic backing

ACOUSTICS

DecorZen Micro will achieve an NRC rating of up to 0.85

DecorZen Micro acoustical panels attain a Noise Reduction Coefficient (NRC) value of up to 0.85, thus providing superb sound absorption.

DecorZen Micro perforated acoustic panels deliver excellent sound absorption performance for medium and low frequencies.

Benefits

- Seamless appearance.
- Easy to install with DecorMount concealed fixing systems.
- DecorZen Micro sheets are easily cut on site.

Sheet Sizes

2800 X 1320 X 19mm

HOW TO SPECIFY

1. Choose a size



OR create a
CUSTOM
SIZE
specific to
your project.

2. Choose a profile



Classic 3/3/1 mm open surface
8.7% 111.111 holes/m²



Finest 1.8/1.8/0.5mm open
surface 6.1% 308.642 holes/m²

3. Choose a finish (For more colours please refer to our finishes booklet)

Wood Veneer



Canadian Maple

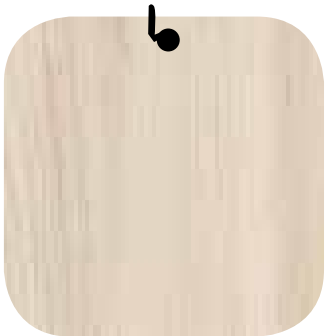


European Oak



American Walnut

Laminates



Champagne
Hard Maple



Charleston Oak
Dark Brown



Grey Beige
Bamenda



Light Lakeland Acacia



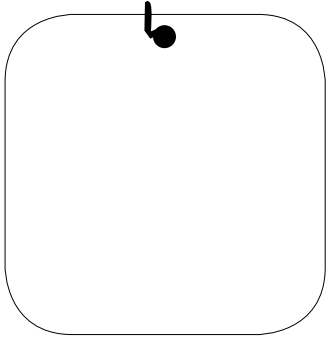
Natural
Bardolino Oak



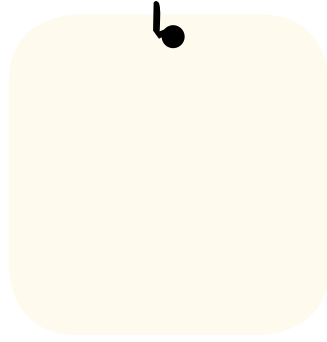
Sorano Oak
Natural Light

Colours are indicative only.

Solid Colours



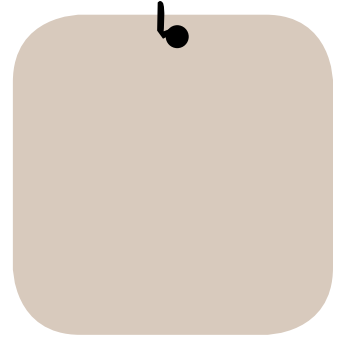
Premium White



Platinum White



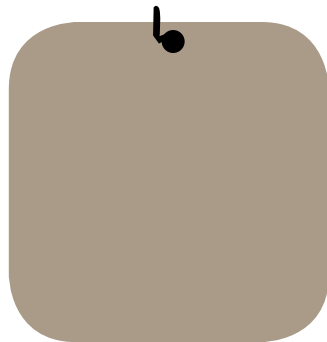
Light Grey



Cashmere Grey



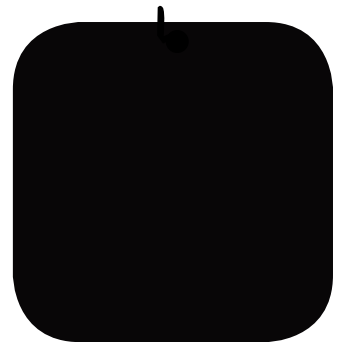
Aluminum



Stone Grey



Onyx Grey



Black

Structured Decors

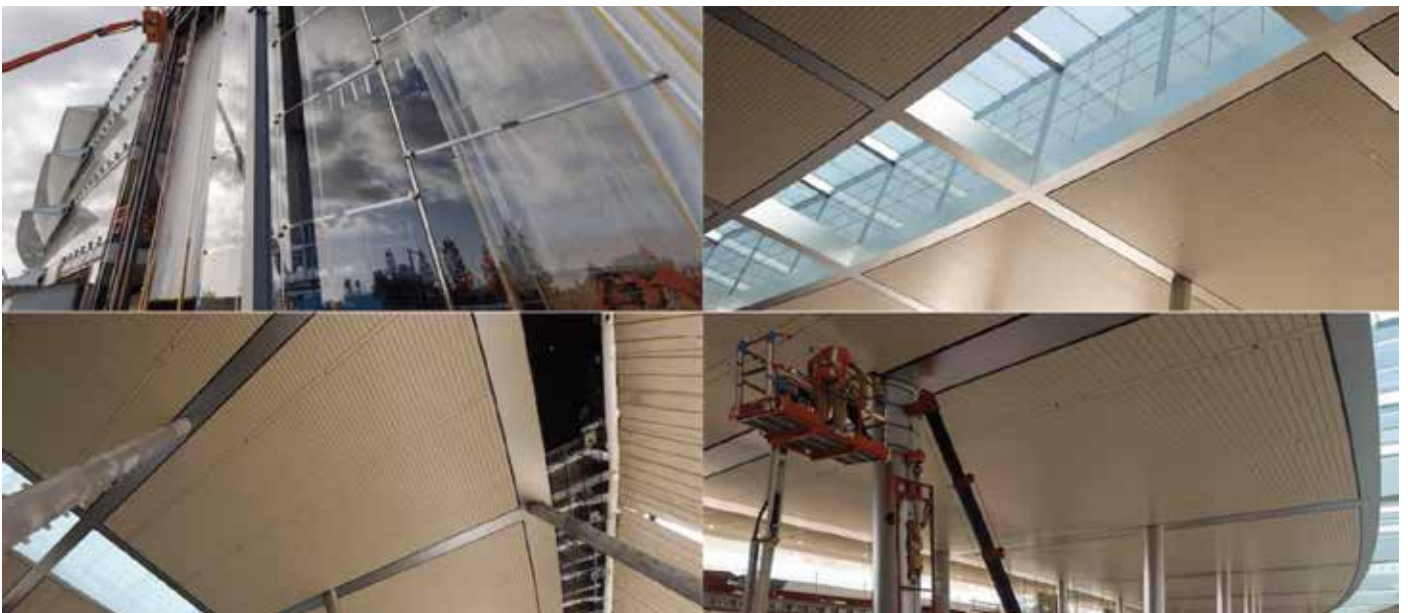


Chromix Silver



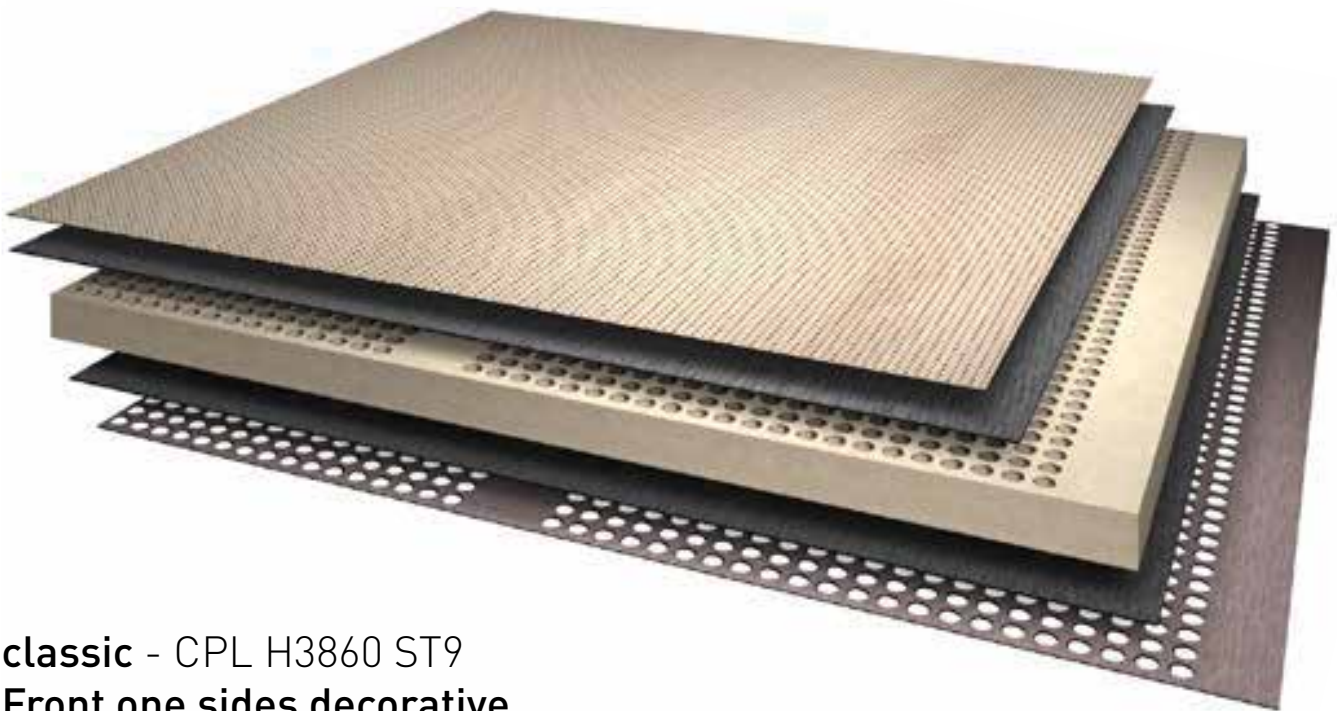
White Claystone

Colours are indicative only.





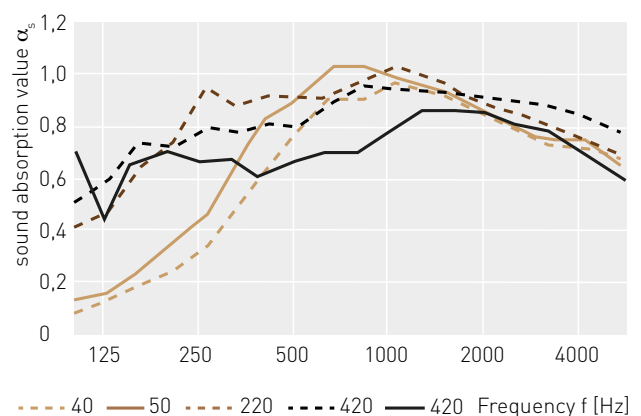
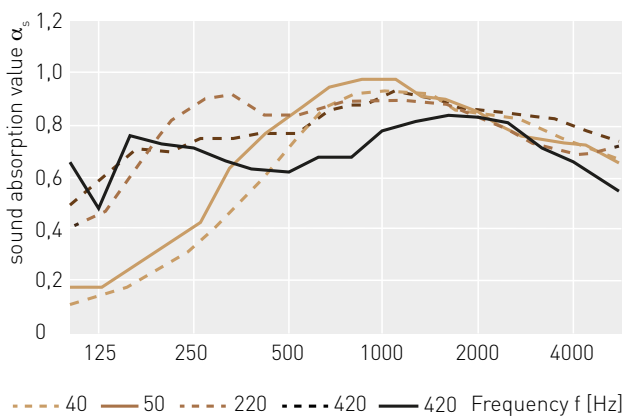
BOARD STRUCTURE



classic - CPL H3860 ST9
Front one sides decorative

DecorZen Micro Acoustic Test Results

Classic 3/3/1 mm						Finest 1.8/2.8/0.5 mm				
Overall Structure	40 mm	50 mm	220 mm	420 mm	420 mm	40 mm	50 mm	220 mm	420 mm	420 mm
Cavity	-	-	150 mm	350 mm	400 mm	-	-	150 mm	350 mm	400 mm
Mineral Wool	20 mm	30 mm	50 mm	50 mm	-	20 mm	30 mm	50 mm	50 mm	-
Panel Thickness	20 mm	20 mm	20 mm	20 mm	20 mm	20 mm	20 mm	20 mm	20 mm	20 mm
Frequency [Hz]	α_w	α_w	α_w	α_w	α_w	α_w	α_w	α_w	α_w	α_w
100	0.05	0.12	0.41	0.51	0.65	0.05	0.11	0.40	0.51	0.70
125	0.10	0.13	0.47	0.62	0.48	0.11	0.34	0.48	0.61	0.43
160	0.15	0.23	0.69	0.76	0.77	0.17	0.23	0.85	0.76	0.65
200	0.23	0.34	0.89	0.74	0.74	0.22	0.35	0.75	0.75	0.71
250	0.33	0.44	0.98	0.81	0.71	0.32	0.46	0.99	0.84	0.66
315	0.47	0.68	1.01	0.81	0.67	0.49	0.70	0.91	0.81	0.69
400	0.64	0.83	0.90	0.83	0.64	0.66	0.87	0.67	0.84	0.62
500	0.81	0.94	0.91	0.84	0.63	0.83	0.95	0.85	0.83	0.66
630	0.97	1.04	0.97	0.93	0.68	0.97	1.08	0.95	0.94	0.71
800	1.01	1.08	0.97	0.97	0.68	1.03	1.08	0.93	0.99	0.70
1.000	1.03	1.08	0.98	1.02	0.77	1.08	1.04	1.01	0.99	0.78
1.250	1.01	1.00	0.98	0.99	0.82	1.03	1.01	0.98	0.98	0.85
1.600	0.97	0.96	0.93	0.95	0.84	0.98	0.96	0.95	0.95	0.86
2.000	0.90	0.90	0.92	0.94	0.83	0.88	0.88	0.91	0.95	0.86
2.500	0.81	0.82	0.89	0.91	0.81	0.81	0.80	0.87	0.93	0.82
3.150	0.75	0.79	0.82	0.89	0.73	0.74	0.78	0.2	0.90	0.79
4.000	0.73	0.78	0.76	0.85	0.66	0.73	0.78	0.77	0.86	0.71
5.000	0.78	0.69	0.70	0.79	0.56	0.70	0.67	0.70	0.82	0.61
α_w	0.65	0.80	0.90	0.95	0.95	0.75	0.65	0.80	0.90	0.75
NRC	0.75	0.85	0.95	0.90	0.74	0.80	0.85	0.95	0.90	0.75
SAA	0.77	0.84	0.94	0.90	0.74	0.78	0.85	0.93	0.90	0.74
Absorption Class	C	B	A	A	C	C	B	A	A	A



How to write up your specification:

- Wall/Ceiling panels shall be DecorZen Micro by Decor Systems.
 - Contact Decor Systems on Ph: 1800 835 035 (please choose a profile and face finish and insert into the posts below)
 - Panels shall be installed with Profile: _____ and face finish of: _____ (Real Wood Veneer, Wood Decors, Uni Decors and Structured Decors)
 - DecorSorb IAB to be applied to the rear of the panels.
 - Panels to be finished with BioPanel Zap-X.
 - Panels to be installed in accordance with manufacturer's instructions, with BJ2 System.
 - Joint to be _____ (please choose a joint option)
 - Panels to be include DecorInsul (Option 8 SmartPack) behind the panels.
 - Decor Systems Panels require a 7 day acclimatization on site prior to installation.
- Additional Items that may be required for your project include:
- FSC, GECA, Fire Ratings, and Returns: Please call the Decor Systems Team to discuss on 1800 835 035
 - Acoustic Panel type cannot to be substituted unless agreed by Architect _____ and Acoustic Engineer _____ (Please insert corresponding names)
 - All panels must be supplied with Completion Certificate Number _____. (Please contact Decor Systems for your project specific reference number)





Apple Campus Project



DECOR SYSTEMS AUSTRALIA

NEW SOUTH WALES
House of Decor
6 Millennium Court
Silverwater NSW 2128
Australia

QUEENSLAND
Unit 11/76 Township Dr,
Burleigh Heads QLD 4220

VICTORIA
The Aurecon Centre
Level 1, 850 Collins St,
Docklands VIC 300
Australia

WESTERN AUSTRALIA
17 Meares Way,
Canning Vale WA 6155

DECOR SYSTEMS NZ
2 Edmonton Road
Hornby Christchurch 8042
New Zealand

DECOR SYSTEMS UK
178 Cheddon Road
Taunton TA2 7AN
United Kingdom

DECOR SYSTEMS AUSTRALIA

FREECALL
1800 835 035

FAX
02 9648 1800

EMAIL
letstalk@decorsystems.com.au

DECOR SYSTEMS NZ

EMAIL
letstalk@decorsystems.co.nz

decorsystems.com.au

