



SCEGGs Darlinghurst  
Architect: TKD Architects  
Photo by Sarah Rowlands

# DECORTREND

Slotted interior acoustic timber  
panel systems

[www.decorsystems.com.au](http://www.decorsystems.com.au)

**DECOR**<sup>®</sup>  
Systems



# HOW TO SPECIFY

## 1. Choose your SUBSTRATE

- Plywood
- Standard MDF
- Moisture Resistant MDF
- Fire Rated MDF
- Black MDF
- OSB
- Other

## 2. Choose a SIZE

1800 x 1200

2400 x 1200

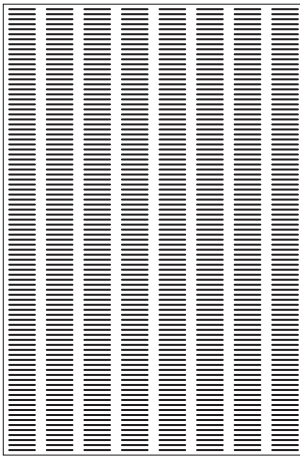
2700 x 1200

3000 x 1200  
on MDF  
substrate only

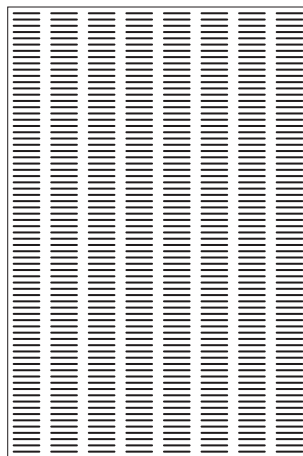
OR create a  
CUSTOM  
SIZE  
specific to  
your project.

## 3. Choose a PROFILE (Please refer to perforations booklet for more information)

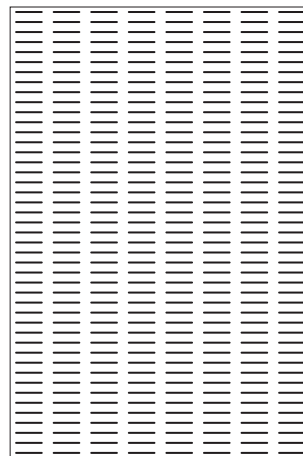
Product type AS11-20/(insert code)



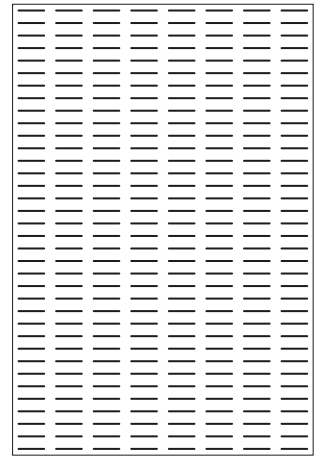
Product type AS11-25/(insert code)



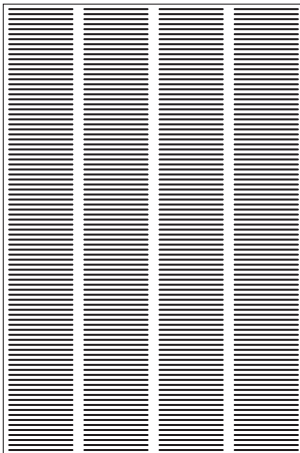
Product type AS11-40/(insert code)



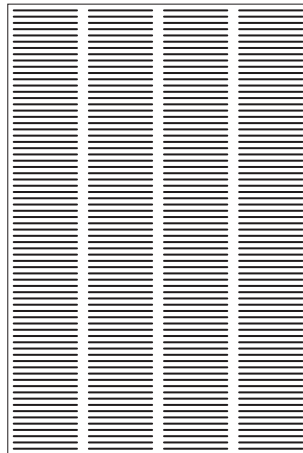
Product type AS11-50/(insert code)



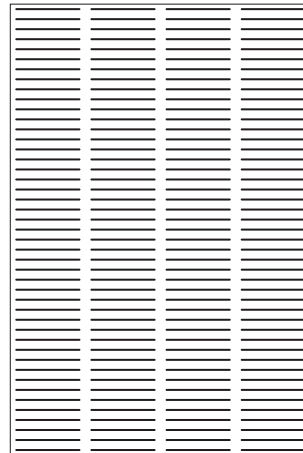
Product type AS26-20/(insert code)



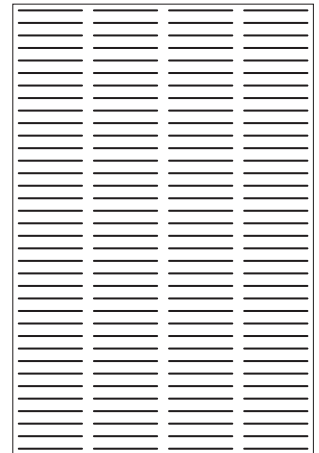
Product type AS26-25/(insert code)



Product type AS26-40/(insert code)



Product type AS26-50/(insert code)



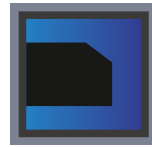
NB: Standard sheet sizes normally 2400 x 1200. Non-standard sizes readily available.

## 4. Choose an EDGE

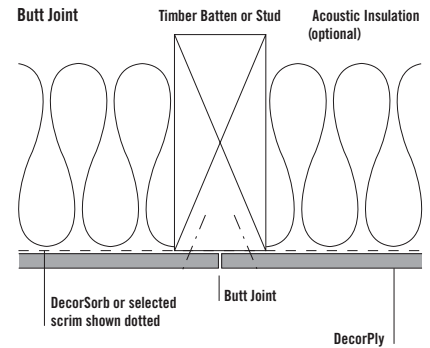
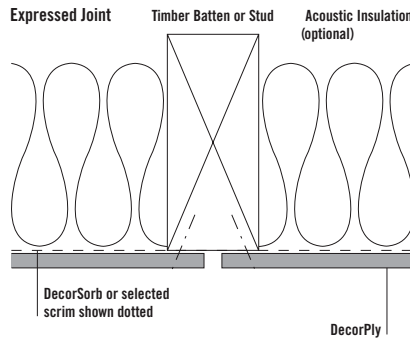
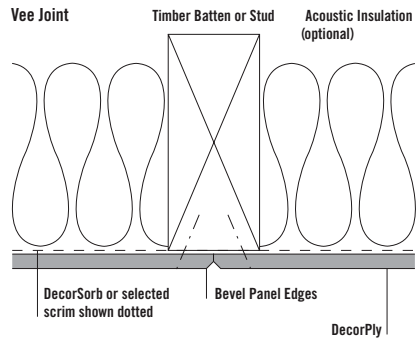
### and a JOINT



Square



Arrised



## 5. Choose a FINISH (For more colours please refer to our finishes booklet)

### DecorImage



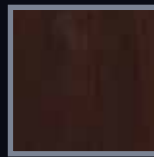
Euro Beech



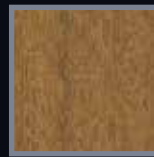
Hoop Pine



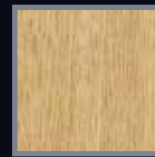
Rock Maple



Royal Cherry



Spotted Gum



Tasmanian Oak

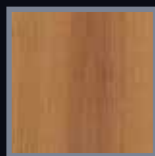


Walnut

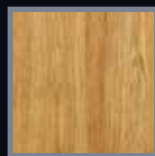
### Natural Timber Veneer – Or any veneer of your choice



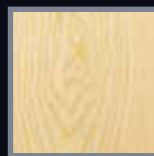
Queensland Hoop Pine



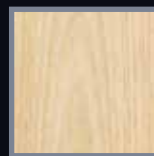
Ned Kelly Ironbark



Roma Blackwood



Alaskan White Ash



Albany Blackbutt



Californian Cherry Crown Cut

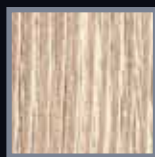


Northern Beach

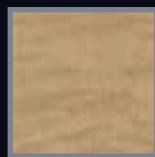
### SmartLook Options



Austrian Forest Maple



Cervera Pine



Oxbow Maple



Aldini Oak



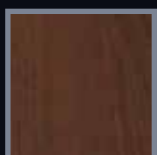
Mozart Beech



Romano Cherry



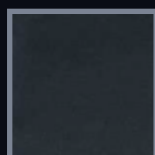
Paterna Walnut



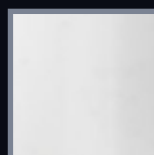
Wentworth Cherry



Woodlands Pine



Midnight



Blanket White

**Any solid polyurethane colour of your choice available**



Finishes are subject to change without notice due to availability.



Toyota Head Office – Architect: Roxby Architects



ResMed – Architect: Toland Architecture

## HOW TO WRITE UP THE SPECIFICATION:

- Wall/Ceiling panels shall be DecorTrend 12 by Decor Systems
- Contact Decor Systems on Ph: 1800 835 035 (please choose a profile and face finish and insert into the posts below)
- Panels shall be installed with Profile: \_\_\_\_\_ and face finish of: \_\_\_\_\_ (Natural Timber Veneer DecorClear, DecorThane, DecorNexx, Smart-Look, and DecorImage)
- DecorSorb IAB to be applied to the rear of the panels Panels to be finished with DecorClear 2 pack Polyurethane finish with the addition of BioPanel Zap-X.
- Panels to be installed in accordance with manufacturer's instructions, with either BJ2 Systems or DSB System.
- Joint to be \_\_\_\_\_ (please choose a joint option)
- Edging to be \_\_\_\_\_ (please choose an edging option)
- Panels to be include DecorInsul (Option 8 SmartPack) behind the panels.
- Decor Systems Panels require a 7 day acclimatization on site prior to installation.
- FSC®, GECA, Fire Ratings, and Returns: Please call the Decor Systems Team to discuss on 1800 835 035
- Panel Size is to be \_\_\_\_\_ (Please choose a panel size)
- Acoustic Panel type cannot to be substituted unless agreed by Architect \_\_\_\_\_ and Acoustic Engineer \_\_\_\_\_ (Please insert corresponding names)
- All panels must be supplied with Completion Certificate Number \_\_\_\_\_. (Please contact Decor Systems for your project specific reference number)



### DECOR SYSTEMS AUSTRALIA

**FREECALL**  
1800 835 035

**FAX**  
02 9648 1800

**EMAIL**  
letstalk@decorsystems.com.au

### DECOR SYSTEMS NZ

**FREECALL**  
0800 000 697

**EMAIL**  
letstalk@decorsystems.co.nz

### DECOR SYSTEMS AUSTRALIA

**NEW SOUTH WALES**  
House of Decor  
6 Millennium Court  
Silverwater NSW 2128  
Australia

**QUEENSLAND**  
160 Lytton Road  
Balmoral QLD 4191  
Australia

**VICTORIA**  
91 – 115 Link Drive  
Campbellfield VIC 3061  
Australia

**WESTERN AUSTRALIA**  
7 Bellows Street  
Welshpool WA 6106  
Australia

### DECOR SYSTEMS NZ

2 Edmonton Road  
Hornby Christchurch 8042  
New Zealand

**DECOR SYSTEMS USA**  
14250 Judicial Road  
Minneapolis MN 55306  
USA

**DECOR SYSTEMS UK**  
178 Cheddon Road  
Taunton TA2 7AN  
United Kingdom

